

PRODUCER PRICE INDEXES FOR SELECTED SERVICE INDUSTRIES

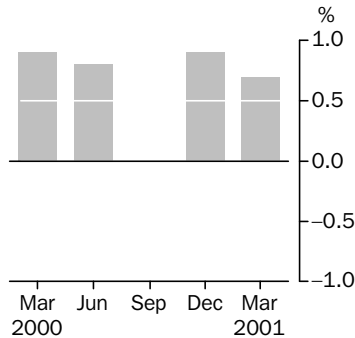
AUSTRALIA

EMBARGO: 11.30AM (CANBERRA TIME) THURS 19 APR 2001

MARCH QTR KEY FIGURES

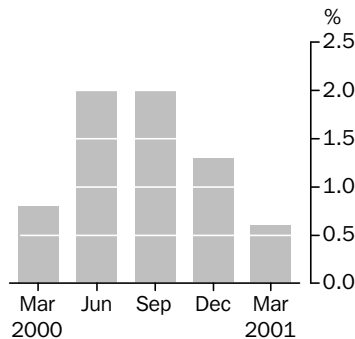
Transport (freight) and storage division

Quarterly % change



Property and business services division

Quarterly % change



	% change Dec Qtr 2000 to Mar Qtr 2001	% change Mar Qtr 2000 to Mar Qtr 2001
--	---	---

Transport (freight) & storage division	0.7	2.4
Road transport (61)	1.1	2.9
Rail transport (62)	—	1.6
Water transport (63)	1.4	5.3
Air and space transport (64)	-0.4	2.4
Services to transport (66)	-0.4	-0.1
Storage (67)	0.7	1.1
Property & business services division	0.6	6.1
Property services (77)	1.4	8.3
Business services (78)	-0.5	3.1

— nil or rounded to zero (including null cells)

MARCH QTR KEY POINTS

TRANSPORT (FREIGHT) & STORAGE DIVISION INDEX

- The index rose 0.7% in the March quarter 2001 compared with an increase of 0.9% in the December quarter 2000.
- There was a 2.4% increase between the March quarters 2000 and 2001.
- Price increases in road transport (1.1%) and water transport (1.4%) were the main contributors to the overall increase in the March quarter 2001.
- The increase in road freight transport (1.1%) resulted from the passing on of previous rises in fuel costs.

FINAL ISSUE
See page 2
for details.

PROPERTY & BUSINESS SERVICES DIVISION INDEX

- The index rose 0.6% in the March quarter 2001 compared with a 1.3% rise in the December quarter 2000.
- There was a 6.1% increase between the March quarters 2000 and 2001.
- Rises in property operators and developers (1.5%) and real estate agents services (1.7%) contributed to the overall increase in property services (1.4%).
- Price decreases in advertising services (-19.4%) were due to seasonal changes in charges associated with television rating periods.

- For further information about these and related statistics, contact the National Information Service on 1300 135 070 or Carolyn O'Rourke on Canberra 02 6252 6081.

NOTES

FORTHCOMING ISSUES

ISSUE (Quarter)

RELEASE DATE

No forthcoming issue

.....

FINAL ISSUE

This issue will be the last of this publication. The ABS has reviewed its publication strategy for producer price indexes with a view to integrating its range of publications. From June quarter 2001 the key series will be published in a new publication, *Producer Price Indexes, Australia* (Cat. no. 6427.0). Subscribers of this publication will be sent details of the new publication and information on arrangements for ensuring that they will continue to receive the series that they are interested in. Others who are interested in receiving details of the new publication should contact Lee Taylor on 1800 155 106.

RELATED STATISTICS

For more information about statistics in this publication and the availability of related unpublished statistics, contact Carolyn O'Rourke on fax (02) 6252 7060, or email carolyn.orourke@abs.gov.au.

ROUNDING

Any discrepancies between totals and sums of components in this publication are due to rounding. For similar reasons quarterly movements shown by sub-group or group index numbers in Tables 3 and 4 do not necessarily correspond exactly with those shown by the relevant index points.

.....

ABBREVIATIONS

ANZSIC Australian and New Zealand Standard Industrial Classification

Dennis Trewin
Australian Statistician

TRANSPORT (FREIGHT) & STORAGE DIVISION INDEX(a)

<i>Period</i>	<i>Index numbers(b)</i>	<i>% change from corresponding quarter of previous year</i>	<i>% change from previous period</i>
1998-99	100.0	na	na
1999-2000	100.2	na	0.2
1998			
September	100.1	na	na
December	100.0	na	-0.1
1999			
March	100.3	na	0.3
June	99.6	na	-0.7
September	99.5	-0.6	-0.1
December	99.5	-0.5	—
2000			
March	100.4	0.1	0.9
June	101.2	1.6	0.8
September	101.2	1.7	—
December	102.1	2.6	0.9
2001			
March	102.8	2.4	0.7

na not available

— nil or rounded to zero (including null cells)

(a) See paragraph 5 in the Explanatory Notes.

(b) Base of each index: 1998-1999 = 100.0.

PROPERTY & BUSINESS SERVICES DIVISION INDEX(a)

<i>Period</i>	<i>Index numbers(b)</i>	<i>% change from corresponding quarter of previous year</i>	<i>% change from previous period</i>
1998-99	100.0	na	na
1999-2000	105.6	na	5.6
1998			
September	98.7	na	na
December	99.9	na	1.2
1999			
March	99.8	na	-0.1
June	101.6	na	1.8
September	103.4	4.8	1.8
December	105.0	5.1	1.5
2000			
March	105.8	6.0	0.8
June	108.0	6.3	2.0
September	110.2	6.6	2.0
December	111.6	6.3	1.3
2001			
March	112.3	6.1	0.6

na not available

(a) See paragraph 5 in the Explanatory Notes.

(b) Base of each index: 1998-1999 = 100.0.

TRANSPORT (FREIGHT) & STORAGE DIVISION(a), Subdivision & Group Contributions

<i>ANZSIC</i>	<i>December Qtr 2000</i>	<i>March Qtr 2001</i>	<i>Change</i>
Transport (freight) & storage division	102.1	102.8	0.8
Road transport (61)	49.34	49.89	0.55
Rail transport (62)	9.94	9.94	—
Water transport (63)	11.04	11.19	0.15
Air and space transport (64)	7.67	7.64	-0.03
Services to transport (66)	7.44	7.41	-0.03
Services to water transport (662)	6.03	5.98	-0.05
Other services to transport (664)	1.41	1.43	0.02
Storage (67)	16.61	16.74	0.13

— nil or rounded to zero (including null cells)

(a) For an explanation of this table see paragraph 6 in the Explanatory Notes.

PROPERTY & BUSINESS SERVICES DIVISION(a), Subdivision & Group Contributions

	<i>December</i> Qtr 2000	<i>March</i> Qtr 2001	<i>Change</i>
Property & business services division	111.6	112.3	0.7
<i>Property services (77)</i>	<i>65.58</i>	<i>66.48</i>	<i>0.90</i>
Property operators and developers (771)	20.18	20.47	0.29
Real estate agents (772)	40.63	41.30	0.67
Machinery equipment hiring and leasing (774)	4.77	4.71	-0.06
<i>Business services (78)</i>	<i>46.04</i>	<i>45.83</i>	<i>-0.21</i>
Scientific research (781)	0.70	0.70	—
Technical services (782)	5.71	5.74	0.03
Computer services (783)	8.92	9.05	0.13
Legal and accounting services (784)	8.23	8.29	0.06
Marketing and business management services (785)	8.76	8.33	-0.43
Other business services (786)	13.73	13.73	—

— nil or rounded to zero (including null cells)

(a) For an explanation of this table see paragraph 6 in the Explanatory Notes.

TRANSPORT (FREIGHT) & STORAGE SUBDIVISION GROUP & CLASS INDEXES (a)(b)

<i>Period</i>	<i>Road transport (61)</i>	<i>Road freight transport (611)</i>	<i>Road freight transport (6110)</i>	<i>Rail transport (62)</i>	<i>Rail transport (620)</i>	<i>Rail transport (6200)</i>	<i>Water transport (63)</i>	<i>Water transport (630)</i>	<i>International sea transport (6301)</i>	<i>Coastal water transport (6302)</i>
1996-97	na	na	na	109.8	109.8	109.8	na	na	na	na
1997-98	98.8	98.8	98.8	105.1	105.1	105.1	na	na	na	na
1998-99	100.0	100.0	100.0	100.0	100.0	100.0	100.0	100.0	100.0	100.0
1999-2000	101.0	101.0	101.0	94.4	94.4	94.4	103.8	103.8	105.1	102.5
1996										
June	na	na	na	112.3	112.3	112.3	na	na	na	na
September	na	na	na	111.0	111.0	111.0	na	na	na	na
December	na	na	na	108.5	108.5	108.5	na	na	na	na
1997										
March	97.2	97.2	97.2	110.0	110.0	110.0	na	na	na	na
June	98.1	98.1	98.1	109.5	109.5	109.5	na	na	na	na
September	98.1	98.1	98.1	106.9	106.9	106.9	na	na	na	na
December	99.1	99.1	99.1	106.0	106.0	106.0	na	na	na	na
1998										
March	98.7	98.7	98.7	105.3	105.3	105.3	na	na	na	na
June	99.4	99.4	99.4	102.3	102.3	102.3	na	na	na	na
September	99.4	99.4	99.4	103.3	103.3	103.3	101.8	101.8	104.5	99.2
December	99.7	99.7	99.7	99.8	99.8	99.8	100.4	100.4	101.6	99.3
1999										
March	100.5	100.5	100.5	99.5	99.5	99.5	99.4	99.4	97.7	101.2
June	100.4	100.4	100.4	97.4	97.4	97.4	98.3	98.3	96.2	100.3
September	100.5	100.5	100.5	95.9	95.9	95.9	99.7	99.7	99.0	100.4
December	100.7	100.7	100.7	93.6	93.6	93.6	102.1	102.1	101.4	102.8
2000										
March	100.9	100.9	100.9	94.2	94.2	94.2	104.7	104.7	106.5	102.8
June	101.8	101.8	101.8	93.9	93.9	93.9	108.6	108.6	113.3	103.9
September	101.6	101.6	101.6	93.7	93.7	93.7	108.8	108.8	112.5	105.1
December	102.7	102.7	102.7	95.7	95.7	95.7	108.8	108.8	112.4	105.2
2001										
March	103.8	103.8	103.8	95.7	95.7	95.7	110.3	110.3	114.2	106.4

na not available

(b) Base of each index: 1998-99 = 100.0.

(a) See paragraph 7 in the Explanatory Notes.

<i>Period</i>	<i>Air and space transport (64)</i>	<i>Air and space transport (640)</i>	<i>Scheduled international air transport (6401)</i>	<i>Scheduled domestic air transport (6402)</i>	<i>Services to transport (66)</i>	<i>Services to water transport (662)</i>	<i>Stevedoring (6621)</i>	<i>Water transport terminals (6622)</i>	<i>Port operators (6623)</i>	<i>Services to water transport n.e.c. (6629)</i>
1996-97	na	na	na	na	na	na	108.0	na	105.4	na
1997-98	na	na	na	na	na	na	101.7	na	101.3	na
1998-99	100.0	100.0	100.0	100.0	100.0	100.0	100.0	100.0	100.0	100.0
1999-2000	99.1	99.1	100.1	98.2	97.2	96.6	100.0	99.2	95.8	93.6
1996										
June	na	na	na	na	na	na	112.2	na	110.6	na
September	na	na	na	na	na	na	112.2	na	105.4	na
December	na	na	na	na	na	na	112.2	na	105.4	na
1997										
March	na	na	na	na	na	na	103.9	na	105.4	na
June	na	na	na	na	na	na	103.9	na	105.4	na
September	na	na	na	na	na	na	101.7	na	101.3	na
December	na	na	na	na	na	na	101.7	na	101.3	na
1998										
March	na	na	na	na	na	na	101.7	na	101.3	102.2
June	na	na	na	na	na	na	101.7	na	101.3	102.2
September	99.2	99.2	97.7	100.8	100.2	100.4	100.0	99.9	100.0	100.9
December	100.2	100.2	99.6	100.8	100.3	100.4	100.0	99.9	100.0	100.9
1999										
March	102.3	102.3	105.3	99.4	99.7	99.5	100.0	99.7	100.0	99.2
June	98.3	98.3	97.5	99.1	99.9	99.8	100.0	100.6	100.0	99.2
September	98.2	98.2	97.2	99.3	97.2	96.6	100.0	99.2	95.8	93.7
December	96.7	96.7	96.0	97.4	97.2	96.6	100.0	99.2	95.8	93.7
2000										
March	100.5	100.5	103.5	97.6	97.2	96.5	100.0	99.2	95.8	93.5
June	101.1	101.1	103.7	98.5	97.0	96.5	100.0	99.2	95.8	93.5
September	101.8	101.8	104.0	99.6	97.2	96.5	100.0	99.2	95.7	93.5
December	103.3	103.3	106.7	99.9	97.5	96.6	100.0	99.3	95.6	93.8
2001										
March	102.9	102.9	105.5	100.3	97.1	95.8	95.6	99.3	95.3	93.8

na not available

(b) Base of each index: 1998-99 = 100.0.

(a) See paragraph 7 in the Explanatory Notes.

<i>Period</i>	<i>Other services to transport (664)</i>	<i>Customs agency services (6644)</i>	<i>Storage (67)</i>	<i>Storage (670)</i>	<i>Grain storage (6701)</i>	<i>Storage n.e.c. (6709)</i>
1996-97	na	na	95.9	95.9	99.3	92.5
1997-98	na	na	99.4	99.4	100.3	98.4
1998-99	100.0	100.0	100.0	100.0	100.0	100.0
1999-2000	99.9	99.9	100.9	100.9	100.7	101.2
1996						
June	na	na	na	na	97.8	na
September	na	na	93.3	93.3	97.8	88.8
December	na	na	94.4	94.4	97.8	91.1
1997						
March	na	na	97.6	97.6	100.9	94.3
June	na	na	98.3	98.3	100.9	95.7
September	na	na	99.5	99.5	100.9	98.2
December	na	na	99.3	99.3	100.9	97.7
1998						
March	na	na	99.1	99.1	99.8	98.3
June	na	na	99.5	99.5	99.8	99.3
September	99.5	99.5	99.5	99.5	99.8	99.2
December	99.8	99.8	100.3	100.3	99.8	100.7
1999						
March	100.3	100.3	100.1	100.1	100.2	100.1
June	100.3	100.3	100.1	100.1	100.2	100.0
September	100.2	100.2	100.3	100.3	100.2	100.4
December	99.8	99.8	100.4	100.4	100.2	100.7
2000						
March	100.2	100.2	101.3	101.3	101.2	101.5
June	99.4	99.4	101.7	101.7	101.2	102.3
September	100.3	100.3	101.8	101.8	101.2	102.5
December	101.3	101.3	101.7	101.7	101.2	102.1
2001						
March	102.9	102.9	102.4	102.4	103.1	101.7

na not available

(a) See paragraph 7 in the Explanatory Notes.

(b) Base of each index: 1998-99 = 100.0.

PROPERTY & BUSINESS SERVICES SUBDIVISION GROUP & CLASS INDEXES (a)

<i>Period</i>	<i>Property services (77)</i>	<i>Property operators and developers (771)</i>	<i>Commercial property operators and developers (7712)</i>	<i>Real estate agents (772)</i>	<i>Real estate agents (7720)</i>	<i>Machinery equipment hiring and leasing (774)</i>	<i>Motor vehicle hiring (7741)</i>	<i>Plant hiring or leasing (7743)</i>	<i>Business services (78)</i>	<i>Scientific research (781)</i>
1996-97	na	92.4	92.4	na	na	100.8	91.4	102.7	na	na
1997-98	na	96.5	96.5	na	na	97.4	90.2	98.9	na	na
1998-99	100.0	100.0	100.0	100.0	100.0	100.0	100.0	100.0	100.0	100.0
1999-2000	106.9	102.8	102.8	109.9	109.9	101.3	105.0	100.5	103.8	102.7
1996										
June	na	90.1	90.1	na	na	102.5	92.0	104.7	na	na
September	na	91.0	91.0	na	na	102.7	91.8	105.0	na	na
December	na	92.0	92.0	na	na	101.4	91.3	103.5	na	na
1997										
March	na	92.2	92.2	na	na	99.3	91.1	101.0	na	na
June	na	94.4	94.4	na	na	99.7	91.2	101.4	na	na
September	na	95.2	95.2	na	na	98.2	89.9	99.9	na	na
December	na	96.2	96.2	na	na	96.5	89.3	98.0	na	na
1998										
March	na	96.9	96.9	na	na	95.9	89.9	97.1	na	na
June	na	97.7	97.7	na	na	99.0	91.8	100.5	na	na
September	98.3	98.6	98.6	97.9	97.9	99.4	94.8	100.3	99.4	98.3
December	99.9	100.5	100.5	99.5	99.5	99.8	100.5	99.7	99.8	98.4
1999										
March	100.4	100.3	100.3	100.5	100.5	100.4	102.2	100.1	99.0	101.3
June	101.4	100.6	100.6	102.1	102.1	100.4	102.5	99.9	101.7	102.0
September	103.6	101.3	101.3	105.2	105.2	101.1	103.1	100.7	103.1	102.3
December	105.6	102.2	102.2	108.2	108.2	101.4	104.6	100.7	104.1	102.3
2000										
March	107.8	103.0	103.0	111.3	111.3	101.2	105.8	100.3	103.3	103.0
June	110.5	104.6	104.6	115.0	115.0	101.4	106.3	100.4	104.6	103.0
September	113.4	106.3	106.3	118.9	118.9	101.4	102.0	101.2	106.1	103.5
December	115.1	108.7	108.7	120.5	120.5	101.6	103.4	101.2	107.0	104.8
2001										
March	116.7	110.3	110.3	122.5	122.5	100.4	102.8	99.9	106.5	105.1

na not available

(a) Base of each index: 1998-99 = 100.0.

<i>Period</i>	<i>Scientific research (7810)</i>	<i>Technical services (782)</i>	<i>Architectural services (7821)</i>	<i>Surveying services (7822)</i>	<i>Consultant engineering services (7823)</i>	<i>Computer services (783)</i>	<i>Data processing services (7831)</i>	<i>Information storage and retrieval services (7832)</i>	<i>Computer maintenance services (7833)</i>	<i>Computer consultancy services (7834)</i>
1996-97	na	na	na	na	na	na	na	na	na	na
1997-98	na	na	na	na	na	na	98.0	na	na	na
1998-99	100.0	100.0	100.0	100.0	100.0	100.0	100.0	100.0	100.0	100.0
1999-2000	102.7	102.2	100.3	102.6	102.9	108.0	105.3	99.1	100.7	109.6
1996										
June	na	na	na	na	na	na	na	na	na	na
September	na	na	na	na	na	na	na	na	na	na
December	na	na	na	na	na	na	na	na	na	na
1997										
March	na	na	na	na	na	na	na	na	na	na
June	na	na	na	na	na	na	96.6	na	na	na
September	na	na	na	na	na	na	97.4	na	na	na
December	na	na	na	99.1	na	na	97.5	97.8	na	na
1998										
March	na	na	na	98.9	na	na	97.8	97.8	na	na
June	na	na	na	99.2	na	na	99.3	98.2	na	na
September	98.3	100.4	100.3	100.0	100.5	97.1	99.7	98.3	99.2	96.4
December	98.4	100.2	100.2	99.4	100.3	97.8	99.1	100.0	99.8	97.3
1999										
March	101.3	99.2	99.9	99.1	98.9	99.1	99.0	100.4	100.5	98.9
June	102.0	100.3	99.6	101.6	100.3	106.1	102.3	101.3	100.6	107.5
September	102.3	101.6	99.6	102.1	102.3	106.4	103.8	101.0	100.5	107.7
December	102.3	102.0	99.9	102.7	102.7	108.2	104.9	100.4	100.7	109.9
2000										
March	103.0	102.3	99.9	102.7	103.1	108.6	105.2	100.0	100.7	110.4
June	103.0	102.9	101.9	103.0	103.3	108.7	107.1	95.1	100.7	110.5
September	103.5	103.0	101.0	103.1	103.7	109.2	107.1	94.2	101.0	111.1
December	104.8	103.3	101.1	104.5	103.9	110.6	107.1	94.1	102.5	112.8
2001										
March	105.1	103.9	100.6	105.6	104.9	112.2	108.7	94.3	102.5	114.7

na not available

(a) Base of each index: 1998-99 = 100.0.

<i>Period</i>	<i>Legal and accounting services (784)</i>	<i>Legal services (7841)</i>	<i>Accounting services (7842)</i>	<i>Marketing and business management services (785)</i>	<i>Advertising services (7851)(b)</i>	<i>Commercial art and display services (7852)</i>	<i>Market research services (7853)</i>	<i>Business management services (7855)</i>	<i>Other business services (786)</i>	<i>Employment placement services (7861)</i>
1996-97	na	na	na	na	na	na	na	na	na	na
1997-98	na	na	na	na	na	na	na	na	na	na
1998-99	100.0	100.0	100.0	100.0	100.0	100.0	100.0	100.0	100.0	100.0
1999-2000	103.1	102.5	103.8	104.2	106.5	102.8	102.8	103.6	102.1	103.7
1996										
June	na	na	na	na	na	na	na	na	na	na
September	na	na	na	na	na	na	na	na	na	na
December	na	na	na	na	na	na	na	na	na	na
1997										
March	na	na	na	na	na	na	na	na	na	na
June	na	na	na	na	na	na	na	na	na	na
September	na	na	na	na	na	na	na	na	na	na
December	na	na	na	na	na	na	na	na	na	na
1998										
March	na	na	na	na	na	98.9	99.5	na	na	na
June	na	na	na	na	na	98.9	99.5	na	na	na
September	99.7	99.9	99.5	100.7	103.7	98.9	99.5	99.6	99.6	100.1
December	99.8	100.0	99.6	102.1	108.1	98.9	99.8	100.1	99.7	99.6
1999										
March	100.2	100.1	100.4	95.6	83.5	100.7	100.2	100.1	100.2	99.9
June	100.3	100.1	100.6	101.7	104.8	101.5	100.4	100.2	100.5	100.4
September	102.0	101.6	102.4	105.0	112.9	102.7	100.6	102.2	101.3	102.1
December	102.3	101.6	103.0	106.4	115.2	102.8	101.8	103.6	102.2	104.9
2000										
March	103.3	102.7	104.0	99.4	87.9	102.9	104.2	104.0	102.8	104.9
June	104.7	103.9	105.7	105.9	109.8	102.9	104.6	104.6	102.0	103.0
September	106.6	106.1	107.2	109.6	117.4	104.8	106.1	107.3	103.2	103.9
December	107.4	106.1	109.0	111.0	120.4	104.8	106.8	108.4	103.9	104.2
2001										
March	108.2	106.9	109.8	105.6	97.1	107.9	108.7	109.2	103.8	105.0

na not available

(a) Base of each index: 1998-99 = 100.0.

(b) Covers television advertising placement services only, where charges are associated with television rating periods. Other advertising services will be included in due course.

PROPERTY & BUSINESS SERVICES SUBDIVISION GROUP & CLASS INDEXES (a) *continued*

<i>Period</i>	<i>Contract staff services (7862)</i>	<i>Secretarial services (7863)</i>	<i>Security and investigative services (except police) (7864)</i>	<i>Pest control services (7865)(b)</i>	<i>Cleaning services (7866)(b)</i>	<i>Business services n.e.c. (7869)</i>
1996-97	na	na	na	na	na	na
1997-98	na	na	na	na	na	na
1998-99	100.0	100.0	100.0	100.0	100.0	100.0
1999-2000	103.7	101.2	101.1	102.4	104.2	101.6
1996						
June	na	na	na	na	na	na
September	na	na	na	na	na	na
December	na	na	na	na	na	na
1997						
March	na	na	na	na	na	na
June	na	na	na	na	na	na
September	na	na	na	na	na	na
December	na	na	na	na	na	na
1998						
March	na	na	na	97.3	na	na
June	na	98.4	na	98.2	98.2	na
September	98.8	99.7	99.9	98.2	99.8	99.5
December	99.3	99.3	99.7	99.4	99.6	99.8
1999						
March	100.5	100.5	100.1	100.5	100.3	100.2
June	101.5	100.5	100.3	101.9	100.3	100.5
September	102.4	100.3	100.7	101.9	103.1	101.0
December	102.6	100.3	100.7	102.8	103.2	102.2
2000						
March	103.5	102.1	101.3	102.5	104.8	102.4
June	106.2	102.1	101.8	102.5	105.5	100.6
September	107.5	102.9	103.8	103.4	108.0	101.6
December	109.4	104.6	103.8	103.4	108.4	102.2
2001						
March	109.7	105.6	104.1	105.1	110.3	101.2

na not available

(a) Base of each index: 1998-99 = 100.0.

(b) Excludes domestic activities.

EXPLANATORY NOTES

INTRODUCTION

1 In recognition of the increasing contribution of service industries to the Australian economy, the ABS has embarked on a long-term development program to progressively extend the scope of the producer price indexes into the service sectors of the economy. First results from this program were published in March 1999, by way of experimental indexes, in Information Paper: *Producer Price Index Developments* (Cat. no. 6422.0).

2 This publication presents producer price indexes for the output of the Transport (freight) & Storage Division, and the Property & Business Services Division of the Australian and New Zealand Standard Industrial Classification (ANZSIC). Included are index numbers for each of the divisions and subdivisions and for selected groups and classes. The index numbers are calculated on the reference base 1998–99=100.0.

VALUATION BASIS

3 As services indexes are output indexes the valuation basis is basic prices. The basic price is the amount received by the service provider exclusive of taxes (less subsidies) on products, and transport and trade margins (where relevant).

CLASSIFICATION

4 The service industry price index development work is being undertaken within the classification framework provided by the ANZSIC.

5 The Transport (freight) & Storage Division and Property & Business Services Division indexes measure changes in prices of services provided by establishments classified respectively to ANZSIC Division I, Transport (freight) & Storage and ANZSIC Division L, Property & Business Services. Index numbers for these divisions are provided in tables 1 and 2.

6 Tables 3 and 4 provide an analysis of the contribution of ANZSIC Subdivisions and Groups respectively to the Transport (freight) & Storage Division and the Property & Business Services Division indexes. For example, the Road Transport Subdivision contributed 49.89 index points to the Transport and Storage Division Index number of 102.80 for March quarter 2001. The three digit ANZSIC codes in these tables contribute to the totals of the two digit ANZSIC codes. For example Scientific research (781) index points of 0.70 contribute to the total Business services (78) index points of 45.83. The final column shows contributions to the change in the division index points, by each subdivision and group.

7 Table 5 contains index numbers for the subdivisions and selected groups and classes of the ANZSIC Transport (freight) & Storage Division I. Transport indexes presented cover freight activities only. That is, passenger transport is excluded.

8 Table 6 contains index numbers for the subdivisions and selected groups and classes of the ANZSIC Property & Business Services Division L.

WEIGHTS

9 The indexes are fixed weights indexes. The ANZSIC class indexes are aggregated to the relevant group, subdivision and division using weights derived from 1994–95 Input-Output production values, in combination with data from other ABS surveys and industry sources. The weights were revalued to reflect price levels in the reference base year, 1998–99.

PRICE MEASUREMENT

10 Prices are generally obtained from principal providers of the services concerned.

11 Actual transactions prices are used in the indexes — that is, the prices that service providers actually charge buyers. Price series relate to a set of services with fixed specifications. The aim is to incorporate in the indexes price changes for representative services of constant quality.

EXPLANATORY NOTES *continued*

- PRICE MEASUREMENT *continued*
- 12** The development of these new price collections has involved a wide range of diverse industries with different measurement problems. Accordingly, extensive consultation with industry associations and individual businesses has been undertaken to determine the most viable approach, on a case-by-case basis.
- 13** Particular characteristics found within the services sector of the economy have complicated the task of price measurement.
- 14** The tendency within many industries to provide unique, one-off services tailored to the needs of the individual customers has posed difficulties in establishing continuity of pricing to constant quality.
- 15** The 'bundling' of a range of different component services within the one transaction or contract has required investigation of the feasibility of 'unbundling', that is, obtaining separate prices for each of the components of the total service. Where this has not proven to be feasible, the whole service bundle has been priced in total.
- 16** Respondent businesses are asked to report details of any discounts they offer so that actual transactions prices can be calculated. However, as discounts are sometimes negotiated between individual buyers and sellers in relation to particular transactions, the identification of representative discounts has not always been straightforward.
- 17** The deregulation of some service industries leads to structural changes and more complex pricing practices. To deal with this, we are continually updating our samples to incorporate new businesses and reviewing pricing methodologies over time.
- OTHER SERVICES PRICE INDEXES
- 18** Indexes have been established for most of the industry classes within the Transport (freight) & Storage Division and Property & Business Services Division.
- 19** As the development work has taken place in stages, some of the indexes presented in this publication commence at earlier periods than the reference base. On the other hand, collections for some ANZSIC classes commenced during or after the reference base. Such indexes are not presented in this publication as they are still considered to be experimental. Please contact Carolyn O'Rourke on 02 6252 6081 with any inquiries.
- FUTURE DEVELOPMENTS
- 20** It is planned to publish indexes for the remaining ANZSIC classes within the Transport (freight) & Storage Division and Property & Business Services Division after they develop from experimental to production status. Work will also commence on developing indexes for other divisions of the ANZSIC.
- 21** Any changes to the contents of this publication will be highlighted in the Changes in this issue section on page 2.
- INDEX NUMBERS
- 22** Index numbers for financial years are simple averages of the relevant quarterly index numbers.
- REVISIONS
- 23** In cases where more complete information is obtained after index numbers for a period have been published, or it is discovered that incorrect prices have been used in compiling the indexes, revision to index numbers may occur in subsequent issues of this publication.
- ANALYSIS OF INDEX MOVEMENTS
- 24** Care should be exercised when interpreting quarter-to-quarter movement in the indexes as short-term movements do not necessarily indicate changes in trend.

EXPLANATORY NOTES *continued*

ANALYSIS OF INDEX MOVEMENTS *continued*

25 Movements in indexes from one period to another can be expressed either as changes in 'index points' or as percentage changes. The following example illustrates the method of calculating index points changes and percentage changes between any two periods.

26 Property & Business Services Division index numbers -

March Quarter 2001	112.3	(see Table 2)
less December Quarter 2000	111.6	(see Table 2)
Change in index points	0.7	
Percentage change	= 0.7/111.6 x 100	= 0.6

FURTHER INFORMATION

27 Further information on recent price index developments in the ABS is presented in the following publications:

An Analytical Framework for Price Indexes in Australia (Cat. no. 6421.0)

Producer Price Index Developments (Cat. no. 6422.0)

(Comprises detailed discussion of Stage of Production concept and detail of selected Service Industries Indexes.)

Review of the Import Price Index and Export Price Index, Australia (Cat. no. 6424.0)

Price Indexes and The New Tax System (Cat. no. 6425.0)

RELATED PUBLICATIONS

28 Users may also wish to refer to the following Producer Price Index publications, which are available from ABS bookshops:

Export Price Index, Australia (Cat. no. 6405.0)

Import Price Index, Australia (Cat. no. 6414.0)

Price Index of Materials Used in Building Other than House Building, Six State Capital Cities (Cat. no. 6407.0)

Price Index of Materials Used in House Building, Six State Capital Cities (Cat. no. 6408.0)

Price Indexes of Copper Materials, Australia (Cat. no. 6410.0)

Price Index of Materials Used in Manufacturing Industries, Australia (Cat. no. 6411.0)

Price Indexes of Articles Produced by Manufacturing Industry, Australia (Cat. no. 6412.0)

Price Indexes of Materials Used in Coal Mining, Australia (Cat. no. 6415.0)

Stage of Production Producer Price Indexes, Australia (Cat. no. 6426.0)

29 Other ABS publications which may be of interest include:

Balance of Payments and International Investment Position, Australia (Cat. no. 5302.0)

Consumer Price Index, Australia (Cat. no. 6401.0)

Wage Cost Index, Australia (Cat. no. 6345.0)

Average Weekly Earnings, States and Australia (Cat. no. 6302.0)

Australian National Accounts: Input-Output Tables (Cat. no. 5209.0)

30 Current publications produced by the ABS are listed in the *Catalogue of Publications and Products, Australia* (Cat. no. 1101.0). The ABS also issues, on Tuesdays and Fridays, a *Release Advice* (Cat. no. 1105.0) which lists publications to be released in the next few days. The Catalogue and Release Advice are available from any ABS office.

UNPUBLISHED STATISTICS

31 As well as the statistics included in this and related publications, the ABS may have other relevant unpublished data available. Inquiries should be made to Carolyn O'Rourke on 02 6252 6081 or to the National Information Service

FOR MORE INFORMATION . . .

- INTERNET** www.abs.gov.au the ABS web site is the best place to start for access to summary data from our latest publications, information about the ABS, advice about upcoming releases, our catalogue, and Australia Now—a statistical profile.
- LIBRARY** A range of ABS publications is available from public and tertiary libraries Australia-wide. Contact your nearest library to determine whether it has the ABS statistics you require, or visit our web site for a list of libraries.
- CPI INFOLINE** For current and historical Consumer Price Index data, call 1902 981 074 (call cost 77c per minute).
- DIAL-A-STATISTIC** For the latest figures for National Accounts, Balance of Payments, Labour Force, Average Weekly Earnings, Estimated Resident Population and the Consumer Price Index call 1900 986 400 (call cost 77c per minute).

INFORMATION SERVICE

Data that is already published and can be provided within five minutes is free of charge. Our information consultants can also help you to access the full range of ABS information—ABS user pays services can be tailored to your needs, time frame and budget. Publications may be purchased. Specialists are on hand to help you with analytical or methodological advice.

- PHONE** **1300 135 070**
- EMAIL** client.services@abs.gov.au
- FAX** 1300 135 211
- POST** Client Services, ABS, GPO BOX 796, Sydney NSW 1041

WHY NOT SUBSCRIBE ?

ABS subscription services provide regular, convenient and prompt deliveries of ABS publications and products as they are released. Email delivery of monthly and quarterly publications is available.

- PHONE** 1300 366 323
- EMAIL** subscriptions@abs.gov.au
- FAX** 03 9615 7848
- POST** Subscription Services, ABS, GPO BOX 2796Y, Melbourne Vic 3001



2642300003015

ISSN 1442 8342

RRP \$18.00